

**Exercise 1 page 22**

1. Name three specialised cells as well as the function of each.

**Muscle cells – make movement possible.**

**Nerve cells – transport electrical impulses.**

**Red blood cells – transport oxygen.**

2. Explain the following briefly:

**Tissue: A group of cells that functions together.**

**Organs: A group of tissues that functions together.**

**Systems: A group of organs that functions together.**

**Organism: A group of systems that functions together.**

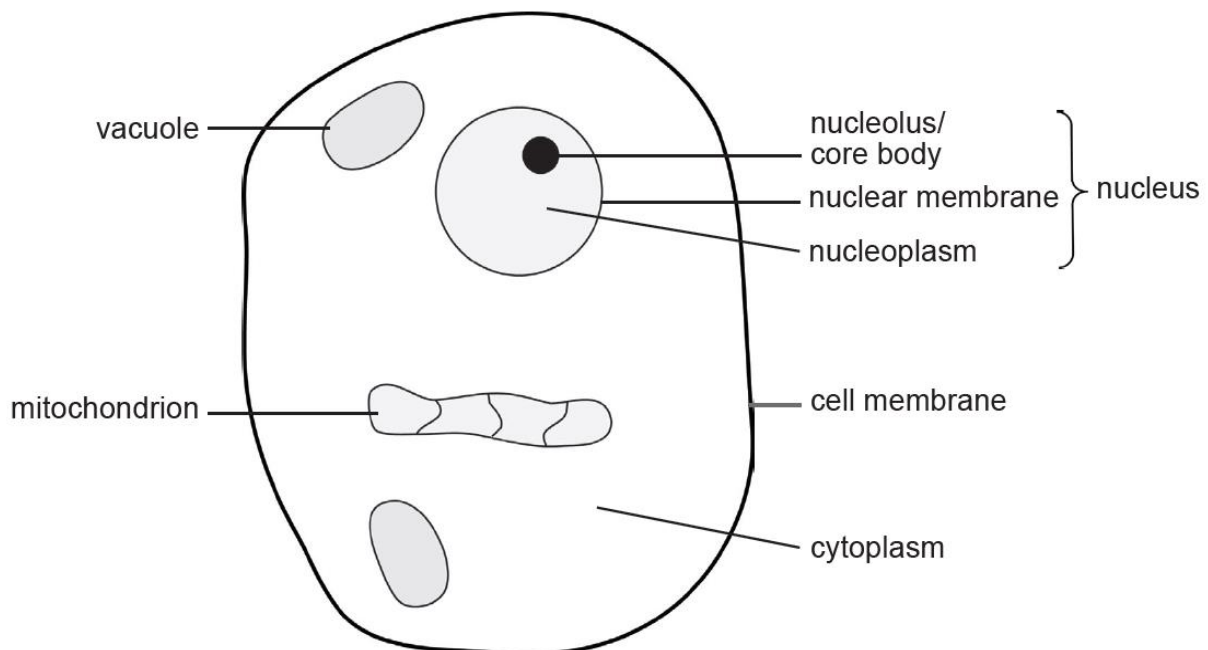
3. Name the four parts found in all plant cells and animal cells.

**Membrane; cytoplasm; nucleus; organelles**

4. What is the function of the cell nucleus?

**It controls the life functions and processes of the cell.**

5. Draw a simple sketch to represent an animal cell. Remember to give your sketch a heading and labels.



6 Study the sketches in the following table. Identify them as cells, tissue, organs, systems or organisms.

**6.1 Tissue**

**6.2 Organism**

**6.3 Organ**

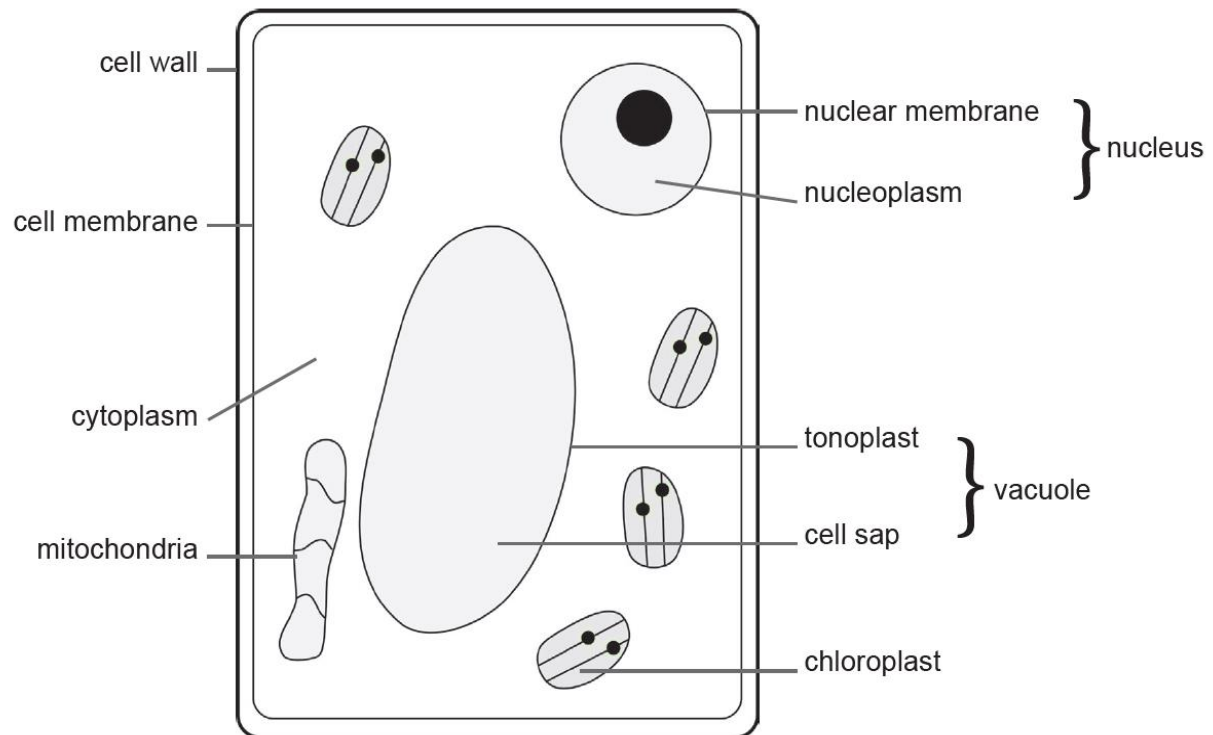
**6.4 Cell**

**6.5 System**

**6.6 Tissue**

**6.7 Organ**

7. Draw a simple sketch to represent a plant cell. Remember to give your sketch a heading and labels.



8 What is the function of:

8.1 the cell wall;

**It gives shape and provides protection to the rest of the cell.**

8.2 the chloroplasts;

**Contains chlorophyll which allows the plant to photosynthesise.**

8.3 the vacuole?

**The vacuole contributes to the shape of the cell.**