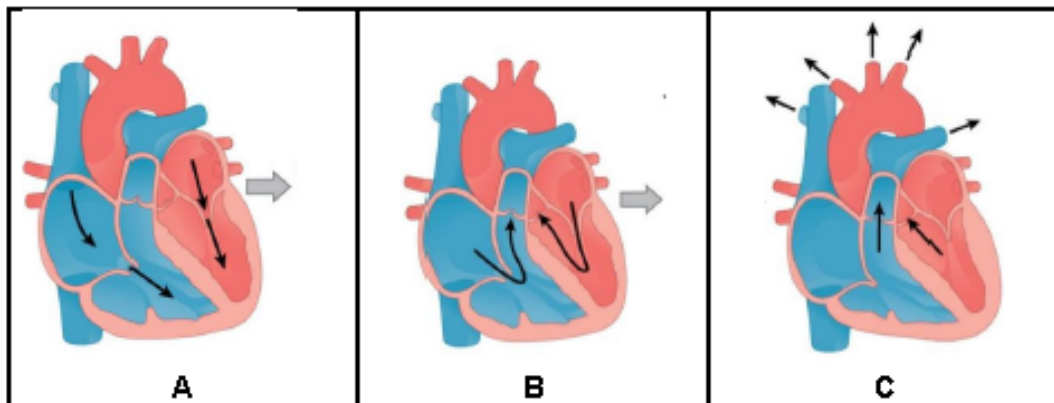


3.5 The diagrams below form part of the cardiac cycle. Study them carefully and answer the questions which follow.



[www.courses.lumen.biology.com]

- 3.5.1 Name stages **A**, **B** and **C** respectively. (3)
- 3.5.2 Describe what happens in the heart during phase **B**. (4)
- 3.5.3 Name the special tissue that sends electrical impulses to the muscle fibre of the atria causing them to contract. (1)
- 3.5.4 How long does each cardiac cycle last? (1)
- 3.5.5 Explain how high carbon dioxide levels in the blood will cause a change in the speed at which the heart beats. (4)

Question 4

Plants and humans have internal transport systems. Briefly describe the differences between these systems by comparing the systems in a plant to that of a human. You must include structural and functional differences. (do not compare the differences at cell and tissue levels)

Content / Inhoud: (17)
 Synthesis / Sintese: (3)
(20)