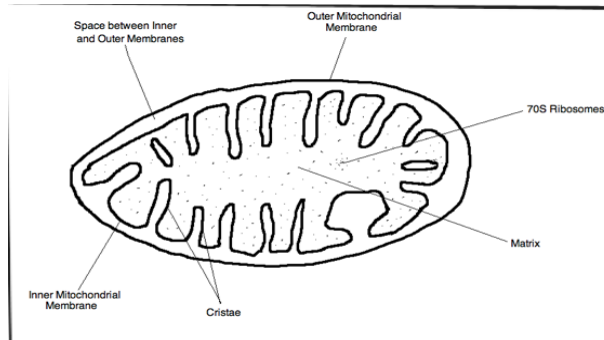


26 May

1.4.1 Animal cell ✓ (1)

1.4.2 Many mitochondria ✓✓ No cell wall ✓✓ (4)



1.4.3.

Correct diagram ✓

Any 3 labels ✓✓✓

[4]  
(9)

1.5.1. A- centriole ✓

B- spindle fibre ✓

C- chromatid ✓

D- centromere ✓

(4)

1.5.2. Eight (8) ✓

1.5.3. Four (4) ✓✓

1.5.4. Growth ✓✓ Repair ✓✓

(1)

(2)

(4)

(11)

2.1.1. "Mitosis gone wrong" refers to cells that do not differentiate, they simply continue dividing in an uncontrolled manner. / The process of mitosis continues without cells becoming specialised. (2)

2.1.2. Benign refers to non cancerous tumours. (1)

2.1.3. Yes – as chemotherapy involves using chemicals that destroy cancer cells directly. (2)

2.2.

2.2.1. Microscope ✓ (1)]

2.2.2. A-Course adjustment control

C- Arm

D- Stand/fool plate

E- Stage

(4)  
(10)